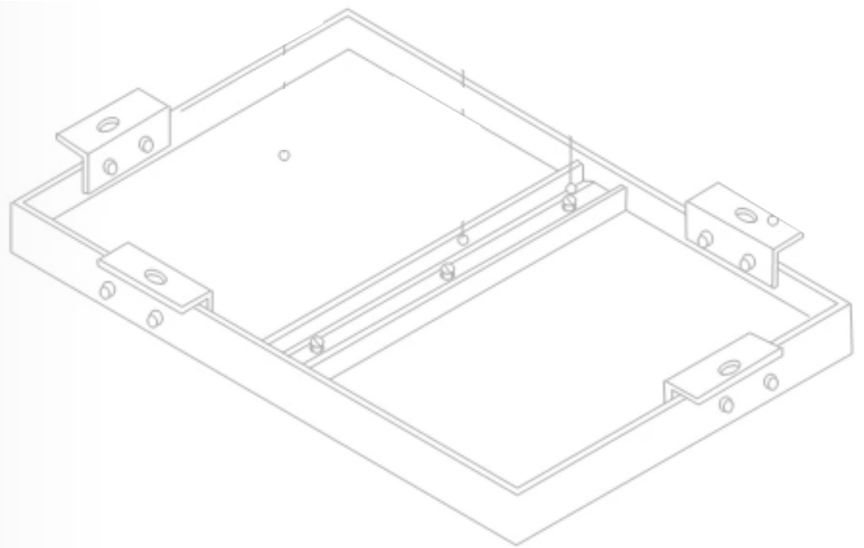




Aluminum Panel Cladding

QUALITY PRODUCTS FOR HIGH-END BUILDINGS



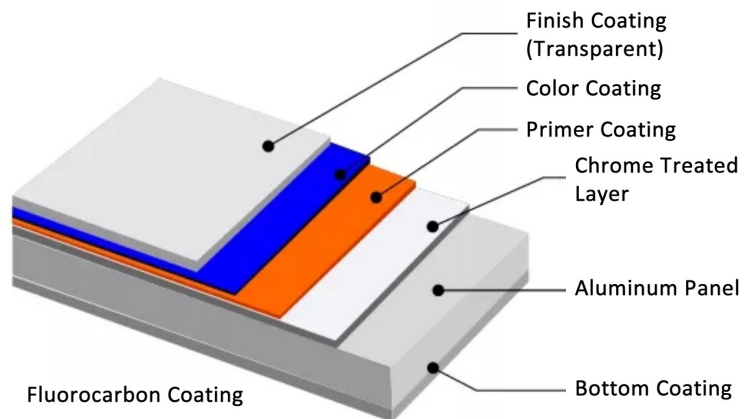
BY SUNNYWEI GROUP INC.

Design
Engineering
Supply
Installation

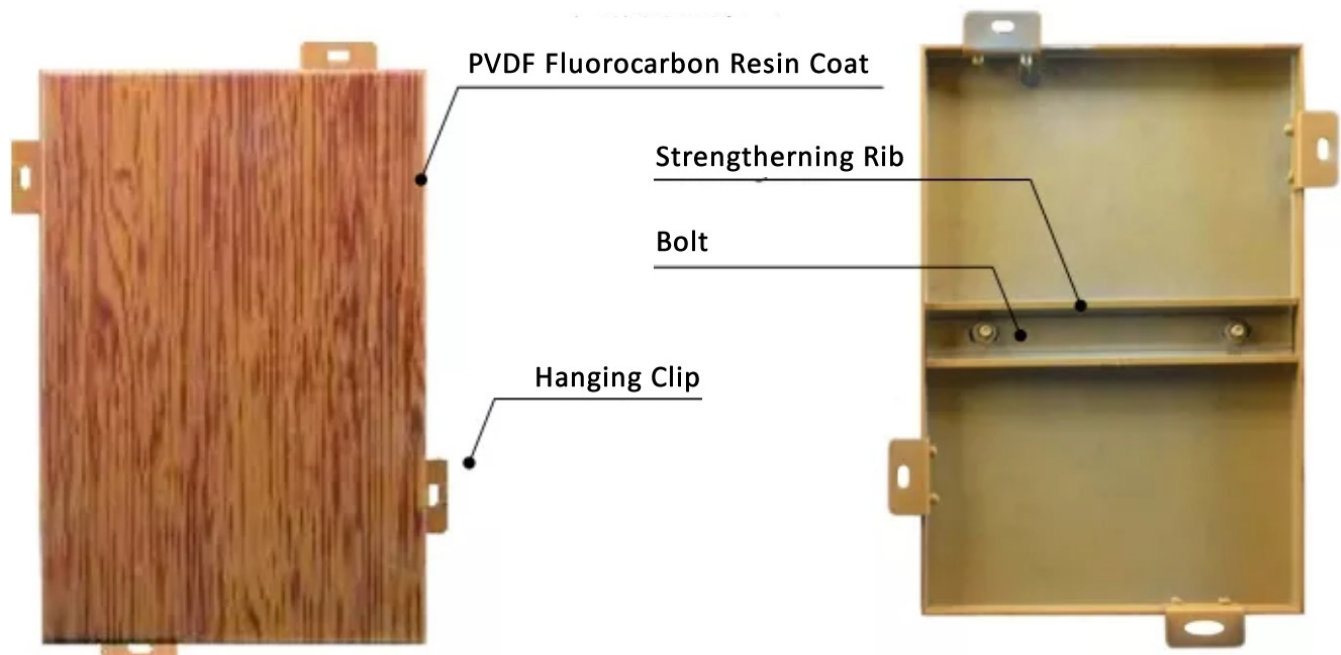
INTRODUCTION

Aluminum panel is made of high quality aluminum alloy sheet as a substrate. After CNC bending and forming, a new wall panel material is coated on the surface of decorative coating. Aluminum panel assembly includes panel, stiffener, bracket, and other parts.

Coating consists of two coated with one baking in accordance with AAMA-2605 (American Architectural Manufacturers Association) and ASCA (American Association of Architectural Coating) standards.



ALUMINUM PANEL STRUCTURE



ALUMINUM PANEL PHYSICAL PROPERTY

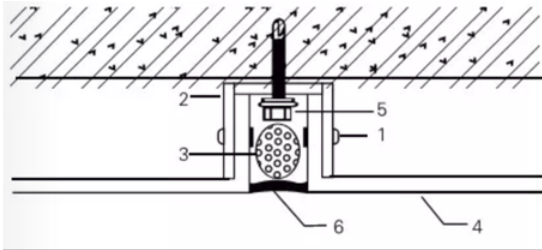
Aluminum Grade	Tensile Strength (MPa)	Yield Strength (MPa)	Extension rate (%)	Inside bending radius
A5052H44	235 - 285	180 Min.	3% Min.	Min. R = 2.5 x t
A3003H44	140 - 180	115 Min.	4% Min.	Min. R = 2 x t
A1100H44	110 - 125	75 Min.	5% Min.	Min. R = 1 x t

H44 - Stain-hardened and painted or lacquered - 1/2 hard

MATERIAL TESTING RESULT

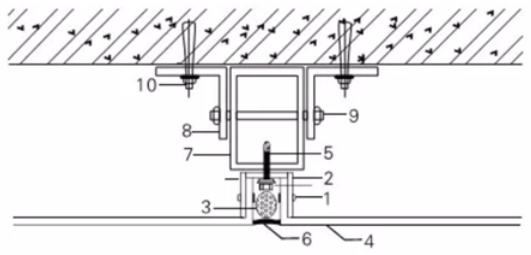
Testing item	Standard of AAMA26505	Result	Remark
Luminosity (60)	Low specification: The lowest 19, medium 20-79 High specification: The lowest 80	25 - 35	ASTM D523 60 tester of gloss measuring
Hardness	The lowest F	H	ASTM D3363 gull turquoise pencil
Power of fixing	Non-exfoliate (100/100)	100/100	Cut in 1mm wet or dry coating
Boiling - bearable	Non-dropping (100/100)	100/100	Cut in 1mm 99 - 100 °C x 20 min
Lash - bearable	Non-dropping	Non-dropping	A diameter of 16 mm Gardner striking testing - ASTM D968
Polish - bearable	Wasting rate (V/T) 40 minutes	65 minutes	ASTM D968
Acid - bearable	Non-bubble, non-change	Passed	Testing of dropping (10% hydrochloric acid) on the surface for 15 min. in the 18 - 28 °C
Mortar - bearable	No loss of paint coating non-changing	Passed	Testing of hitting for 24 hours
Nitric acid - bearable	Maximal color discrepancy: 5 ΔE as per ASTM D2244	3 ΔE	70% Nitric acid, 30 min
Washing - bearable	Non-bubble, non-change as per ASTM 3359	Passed	Glass washing dose
Glass washing - bearable	Non-bubble, non-change	Passed	3% washing dose 38 °C x 72 hours
Wet - bearable	Rusting most: No. 8 as per ASTM D714	Non-bubble	ASTM D2247 100% RH, 100 °F, 4000 hours
Salt fog - bearable	Corroded most: 1/32" ASTM D1654	1/32"	ASTM B117 5% Brine, 100 °F, 4000 hours
Durability	The maximum color discrepancy is 5 ΔE as per ASTM D2244 The lowest exposing rate is 50% (60) as per ASTM D523	3 ΔE 80%	45 °C 10 years of exposing test in south Florida, USA
Aging - bearable	The maximum aging rate as per ASTM D659: No. 8 for non-white color No.6 for white color	Non-white: No.8 White: No. 6	
Corroding - bearable	The maximum loss: 10%	5%	

INSTALLATION DETAILS - CAULKED & VENTILATED



Installation Detail #1

- 1. Rivet 2. Aluminum Corner Connector
- 3. Foam Backing Rod 4. Aluminum Panel
- 5. Taping Screw 6. Caulking

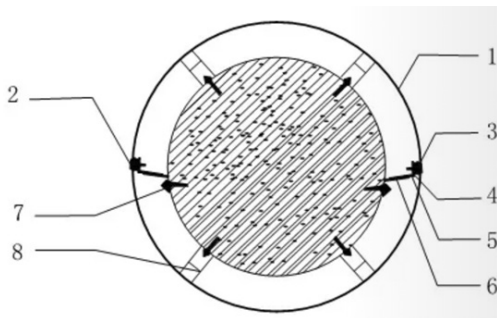
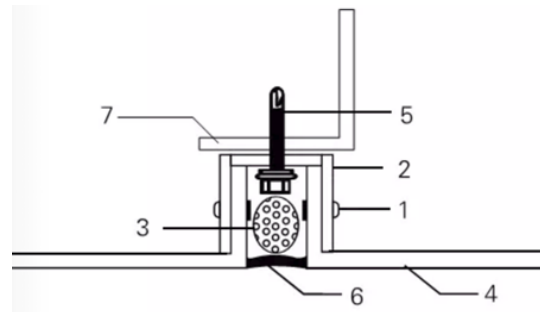


Installation Detail #2

- 1. Rivet 2. Aluminum Corner Connector
- 3. Foam Backing Rod 4. Aluminum Panel
- 5. Taping Screw 6. Caulking
- 7. Aluminum Square Tubing
- 8. Angle 9. Stud 10. Anchor

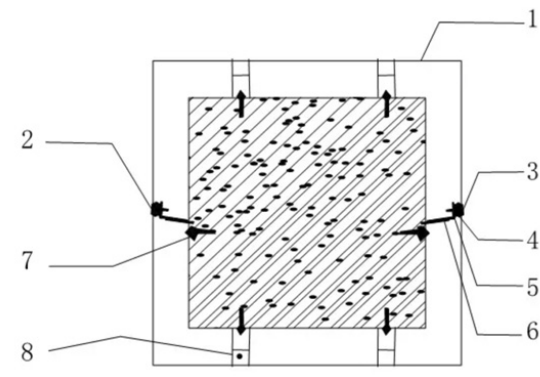
Installation Detail #3

- 1. Rivet 2. Aluminum Corner Connector
- 3. Foam Backing Rod 4. Aluminum Panel
- 5. Taping Screw 6. Caulking
- 7. Angle or Metal Stud

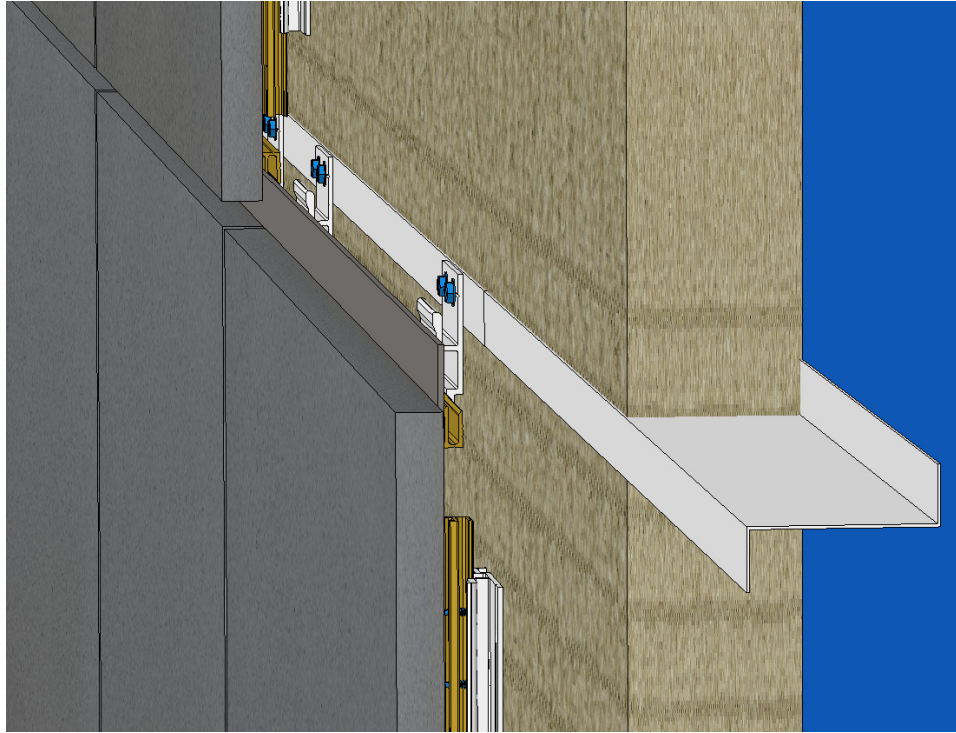


Installation Detail #4

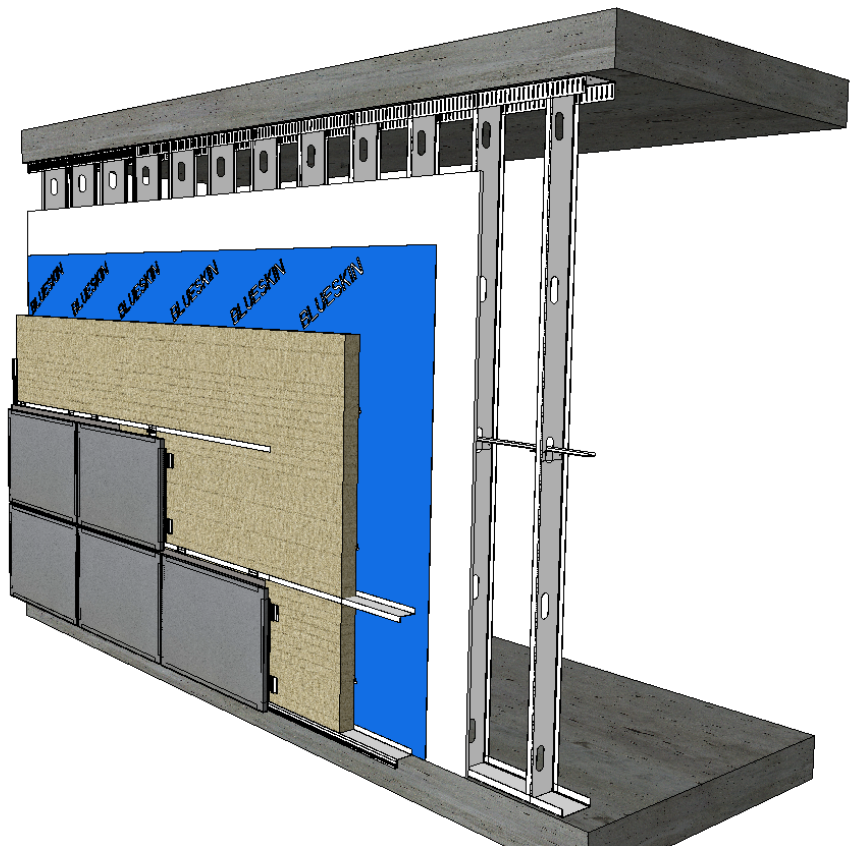
- 1. Curved Aluminum Panel 2. Weather Resistant Caulking 3. Foam Backing Rod 4. Interlocking Installation of Suspension Loop 5. Taping Screw 6. Angle (Stainless Steel/Aluminum/Coated Steel) 7. Expansion Joint
- 8. Aluminum Square Tubing



INSTALLATION DETAILS - ENGINEERED RAINSCREEN SYSTEM



Water intrusion has catastrophic result on building, which can happen due to capillary action, gravity, momentum and air pressure. Sunnywei's rainscreen system will build up a barrier to stop moisture attack on the building wall. The reveal strip is working not only for aesthetic purpose to hide all exposed installation hardware but also as a seal strip against water attack. It can stop majority of the moisture from entering the ventilated cavity between facade panel and building wall. The bypassed moisture will be drained by gravity along the guided channel. With this double-protection air-water barrier, the rainscreen system can keep building wall dry and reduces the energy losses.



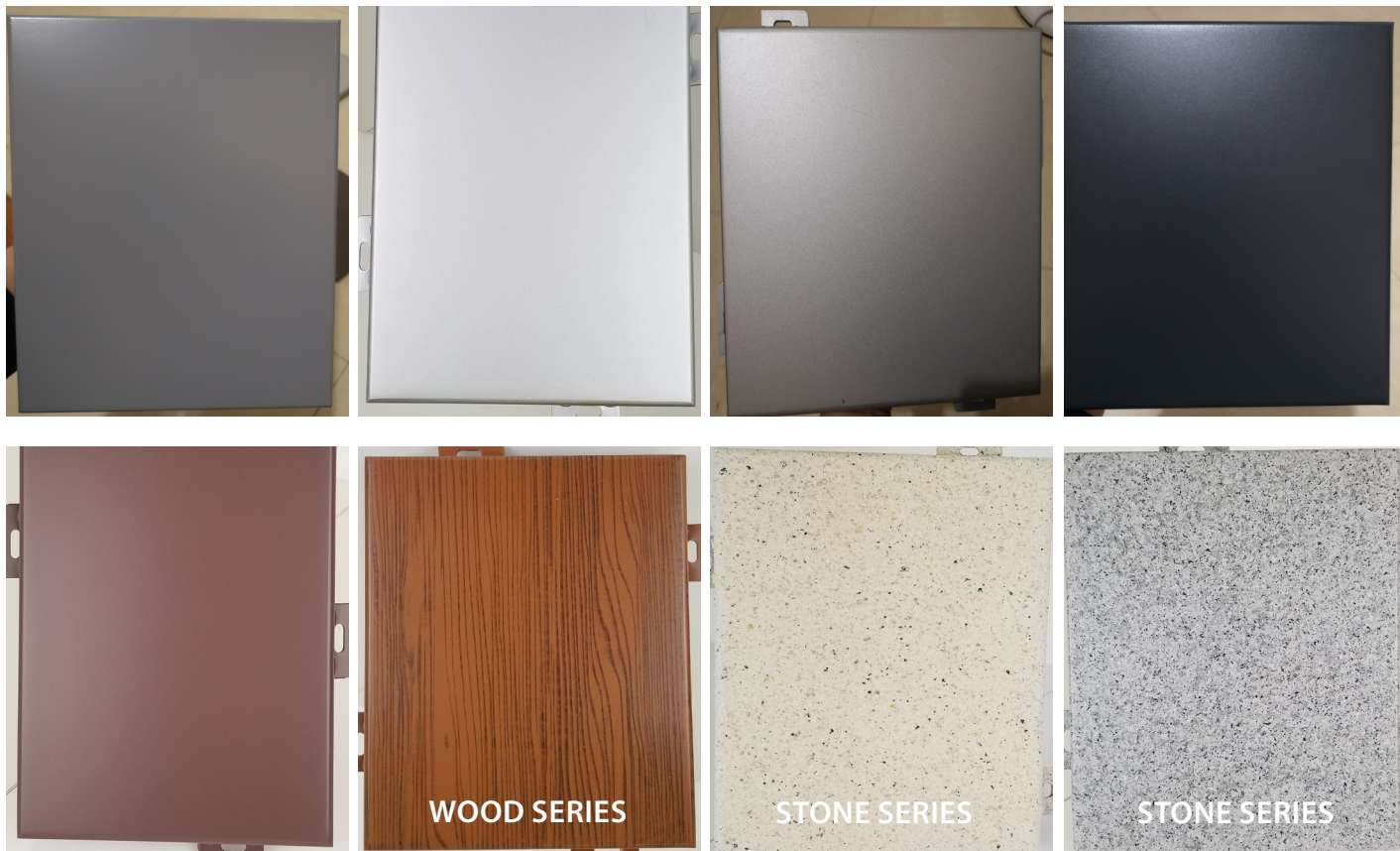
WOOD COLOR SERIES



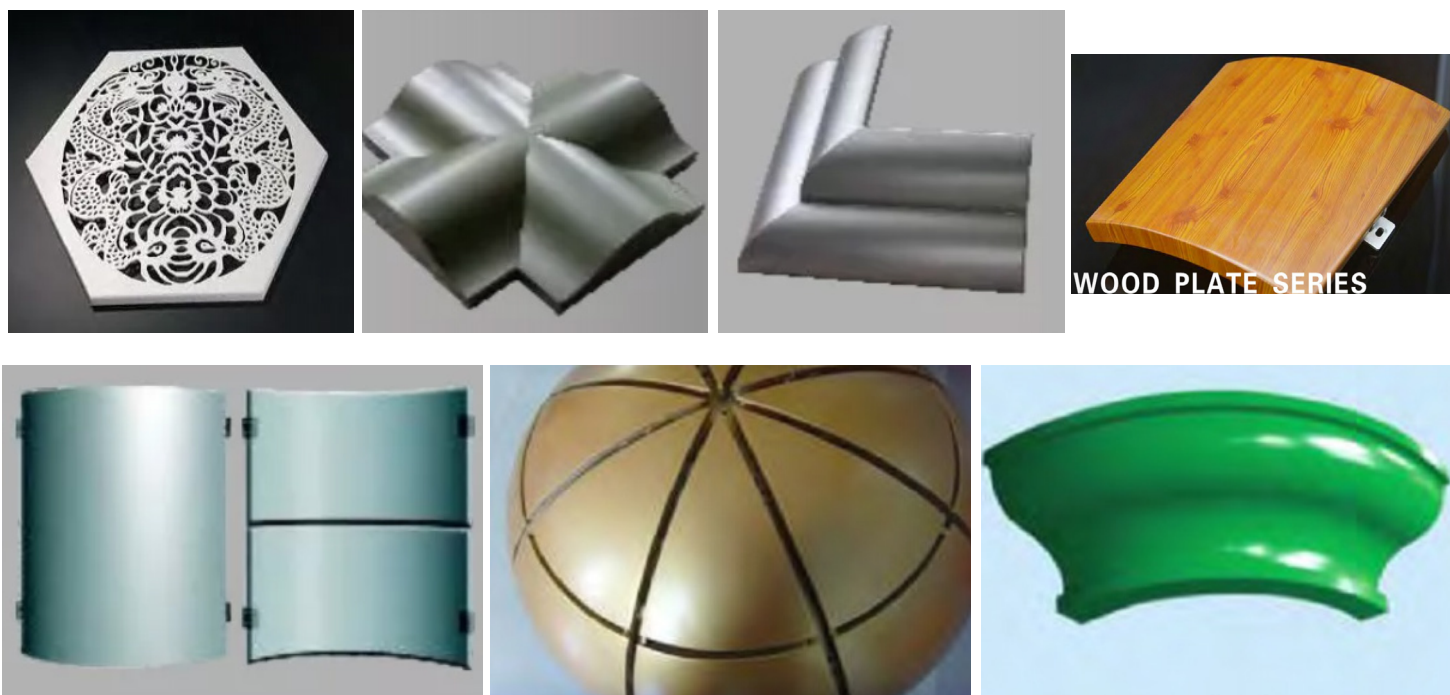
FLUOROCARBON COLOR SERIES

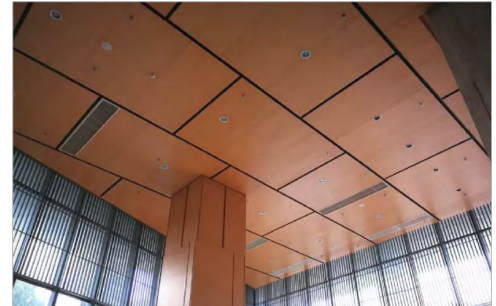
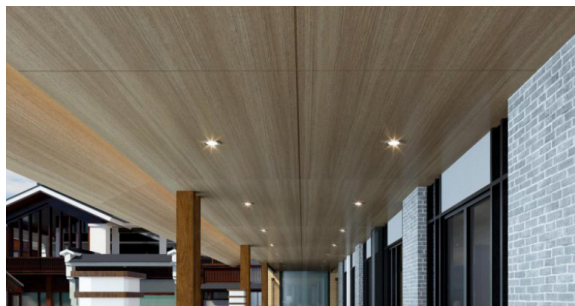
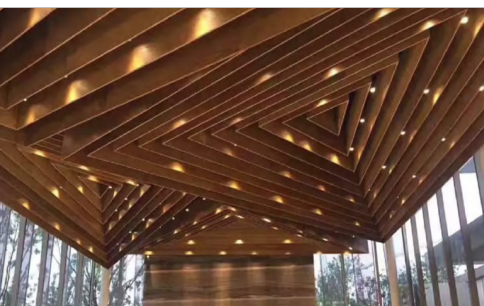
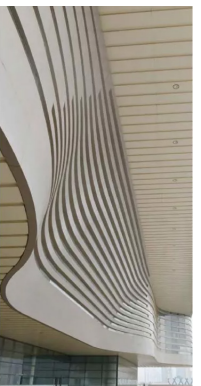
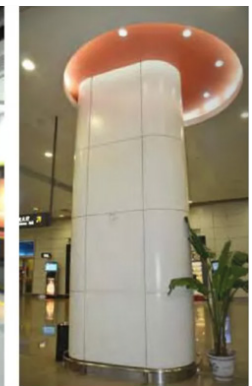
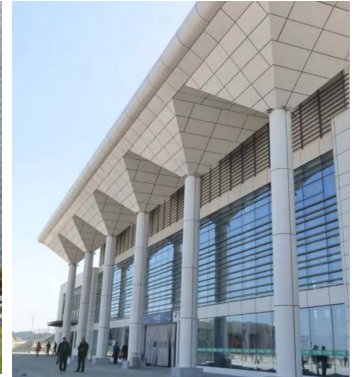
					
SW-A01	SW-A02	SW-A03	SW-A04	SW-A05	SW-A06
					
SW-A07	SW-A08	SW-A09	SW-A10	SW-A11	SW-A12
					
SW-A13	SW-A14	SW-A15	SW-A16	SW-A17	SW-A18
					
SW-A19	SW-A20	SW-A21	SW-A22	SW-A23	SW-A24
					
SW-A25	SW-A26	SW-A27	SW-A28	SW-A29	SW-A30
					
SW-A31	SW-A32	SW-A33	SW-A34	SW-A35	SW-A36
					
SW-A37	SW-A38	SW-A39	SW-A40	SW-A41	SW-A42
					
SW-A43	SW-A44	SW-A45	SW-A46	SW-A47	SW-A48
					
SW-A49	SW-A50	SW-A51	SW-A52	SW-A53	SW-A54
					
SW-A55	SW-A56	SW-A57	SW-A58	SW-A59	SW-A60
					
SW-A61	SW-A62	SW-A63	SW-A64	SW-A65	SW-A66
					
SW-A67	SW-A68	SW-A69	SW-A70	SW-A71	SW-A72

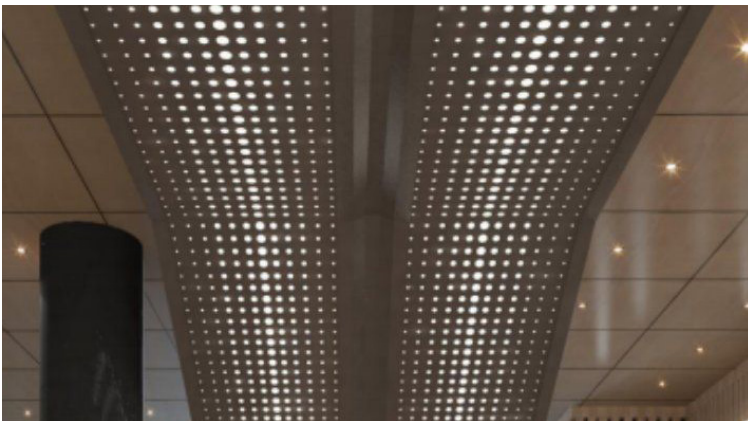
STANDARD PANELS

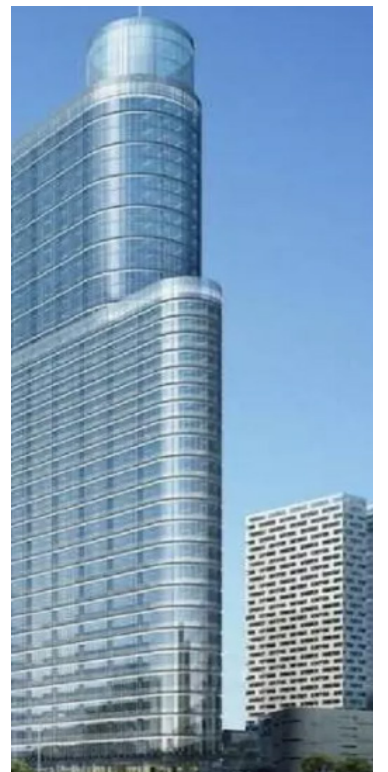
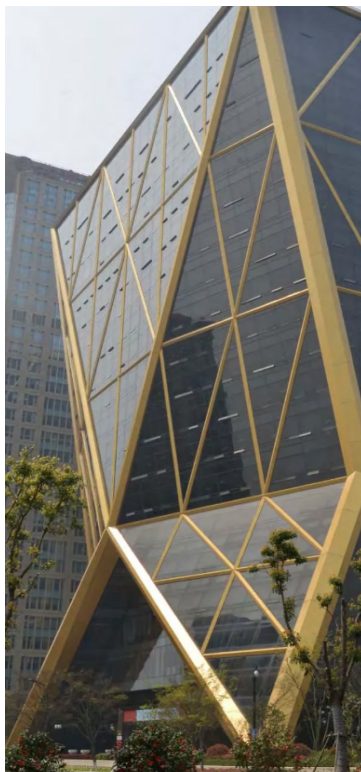


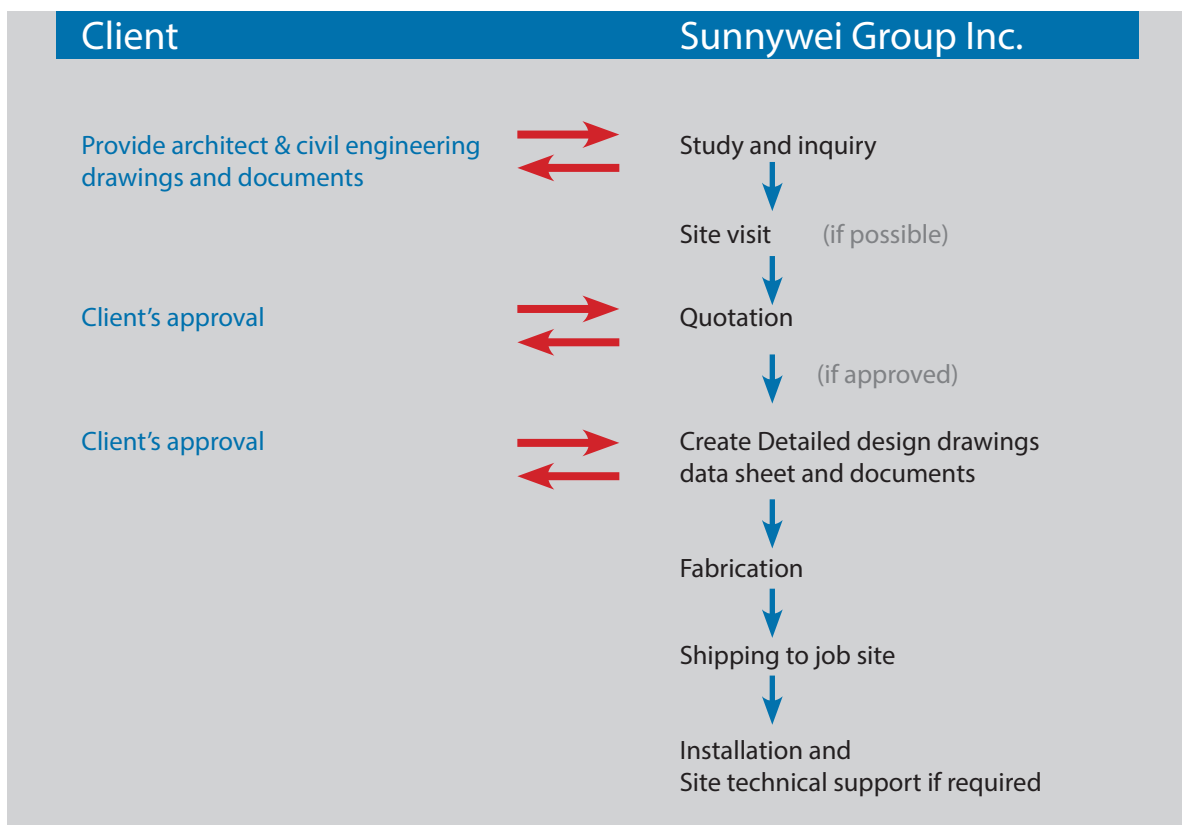
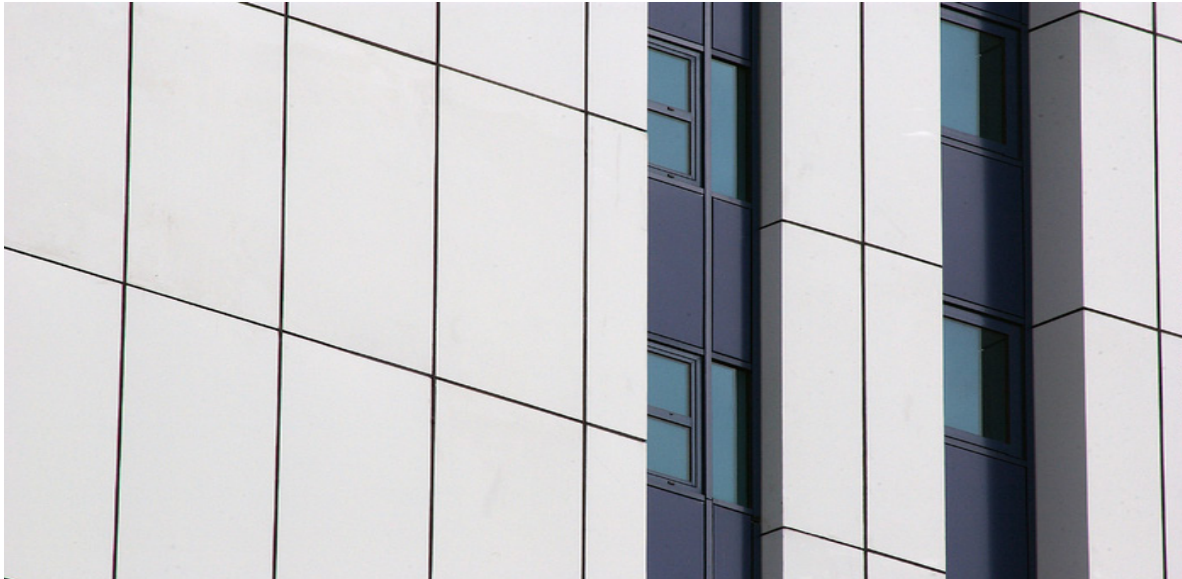
CUSTOMIZED PANELS











CONTACT US: Sunnywei Group Inc.

121 Bradwick Drive, Unit 1 & 2, Concord, ON, L4K 1K5

Tel: 905-738-9916, 905-738-9915, 905-841-9928, 416-825-0218

Fax: 1-866-572-9041, 1-855-351-6357 (Toll Free)